



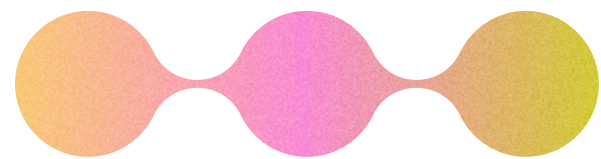
# Effortless Integrate Robot Framework with TestRail





# What Is TestRail

TestRail is a test case and test management programming device that can coordinate with Jira.

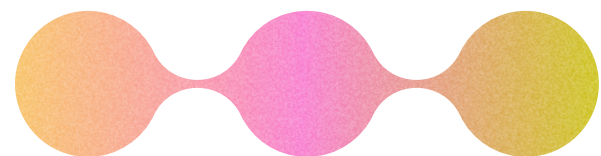


It's the combination of sophisticated project management capabilities with features and is mostly used by the QA and Development teams to manage functional, exploratory, and automated tests.



# Benefits of Robot Framework Integration with TestRail

- Web-Based
- Versatility
- User-Friendly
- Integration with Jira

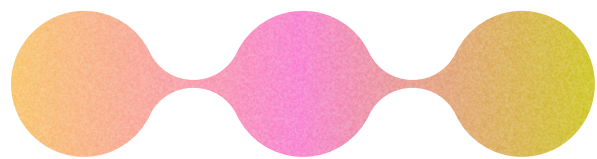




## Ways to Save Test Case Execution Results into the TestRail by Using

- **Testrail Binding**
- **Testrail Listener**
- **Testrail API with the help of references**

It's the combination of sophisticated project management capabilities with features and is mostly used by the QA and Development teams to manage functional, exploratory, and automated tests.

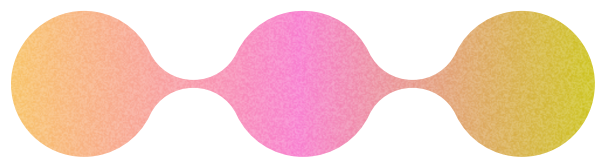
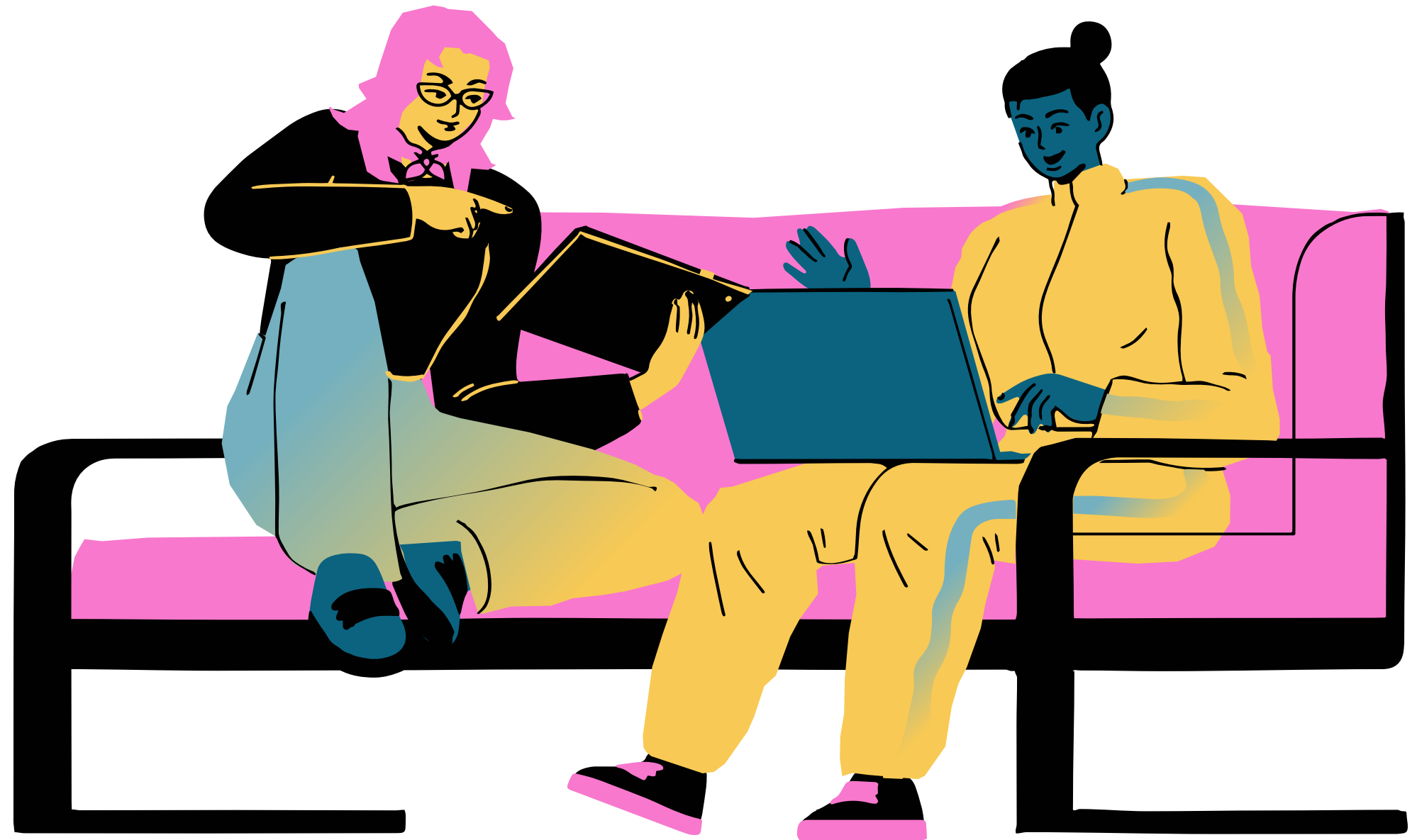




# Link Test Cases

To submit test results from Robot Framework Integration with TestRail, you need to link a test case from Robot Framework to the one in TestRail.

In order to do that, Create a tag named restrained in each test case of the robot framework to store the related TestRail test case ID.





If you're looking to improve your efficiency in integrating Robot Framework, don't miss our blog on Robot Framework Integration with TestRail! Click on the below link.

**[www.devstringx.com/robot-framework-integration-with-testrail](http://www.devstringx.com/robot-framework-integration-with-testrail)**





# LET'S WORK TOGETHER



**Mob:-+91 9958781896 | +1 650 209 7815**

## **Address**

**G-32, Sector-63, Noida, Up, India, 201301**

**16192, Coastal Highway, Lewes, Delaware  
- 19958, USA**

## **Email**

**info@devstringx.com**

## **Website**

**www.devstringx.com**