

CHERRYPAZZI PUZZLES REVIEW BY MANDY

I am a self-proclaimed puzzle snob. I can admit it. When I hear of a brand that I have never seen or tried, and I have never heard of it before, I get a bit standoffish.

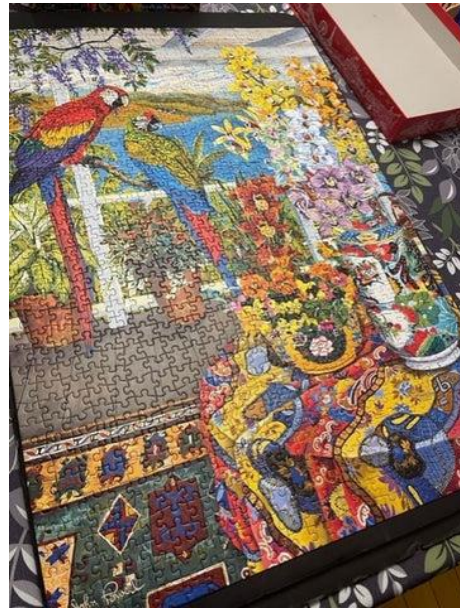
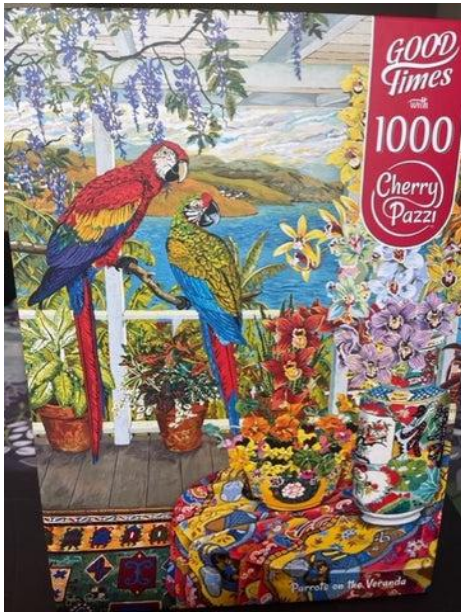
Well, my attitude has changed.

CherryPazzi Puzzles are a new brand that we carry, and wow, they were a surprise.



They are not very commonly known, and I hadn't seen much in any of the puzzle groups, so I wasn't sure what to expect. They have puzzles with 1000-4000 pieces and they are mostly floral art, animals and landscapes.

This is the one I chose to try:



The box was solid with photos of other puzzles on the back. The pieces were in a sealed plastic bag, and there was no puzzle dust. There was no poster either, which was disappointing as the logo covered a large portion of the image on the cover. That is the only thing I didn't like.

Aside from that, I have only good things to say. The pieces were a fun variety of shapes. They were thick, and they did not bend or split. In fact, I will honestly say that these were some of the best pieces I have ever tried. They had a nice solid feel with a smooth matte finish. Really amazing pieces. I didn't have any issues at all.

This image was really fun with such bright colors and selection of patterns. The pieces fit well and there were no false fits. I really loved everything about this puzzle, and I will say both these and the **Magnolias** are going to be tough to beat in terms of quality. As I am not the biggest fan of scenic images, I don't know how many I will do from this brand in the near future, but I will be on the lookout for any opportunity to complete one of these fabulous quality puzzles.

Highly recommended!! Please try one! You will not regret it.

