

Follicle Stimulating Hormone (FSH) Test



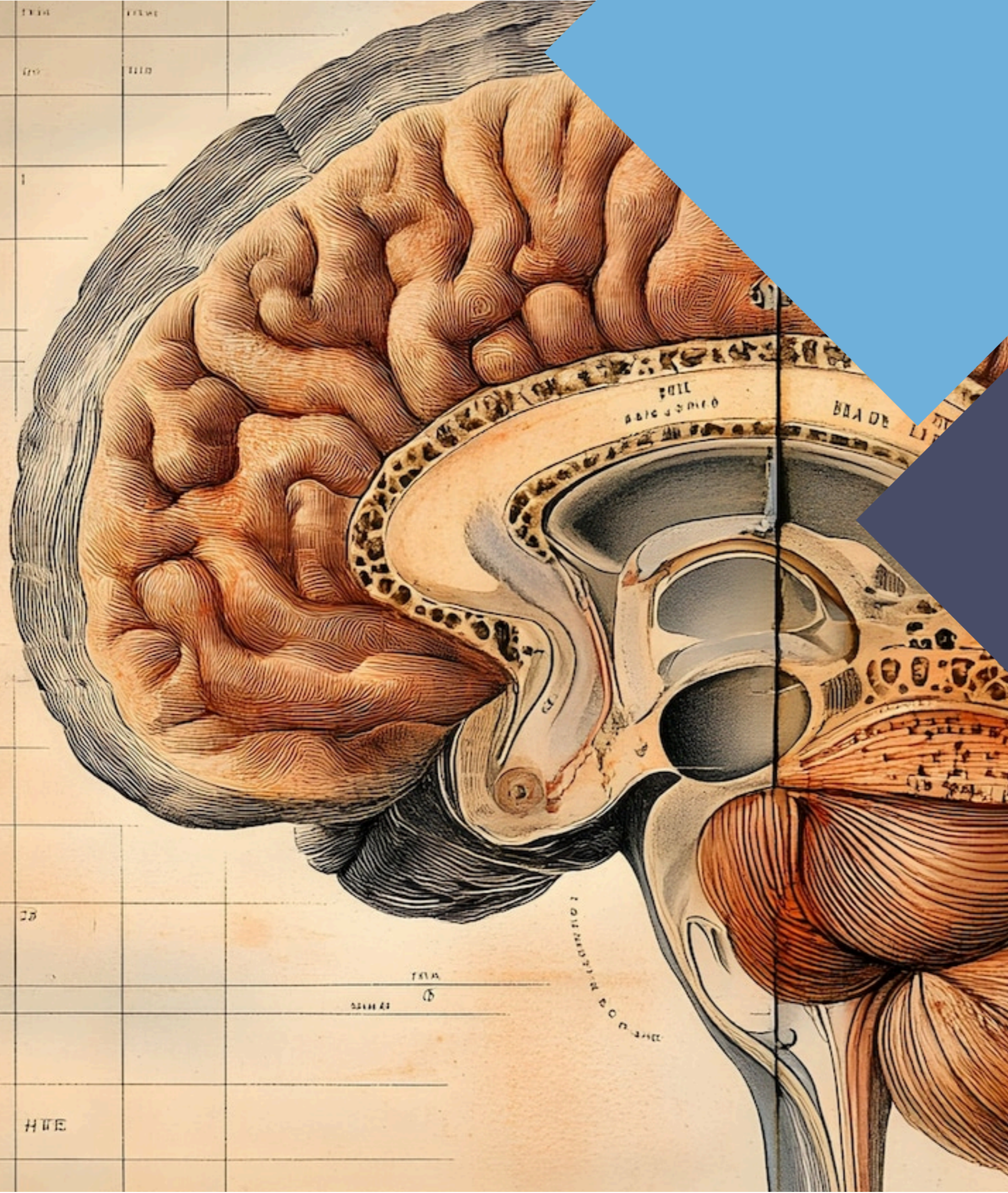
Introduction to FSH

Follicle Stimulating Hormone (FSH) is a crucial hormone in reproductive health, primarily involved in the regulation of the menstrual cycle and the development of eggs in women. Understanding its role can provide insights into fertility issues and hormonal imbalances.



What is FSH?

FSH is a glycoprotein hormone produced by the **pituitary gland**. It plays a vital role in the growth and maturation of ovarian follicles in women and spermatogenesis in men. Abnormal levels can indicate reproductive health issues.



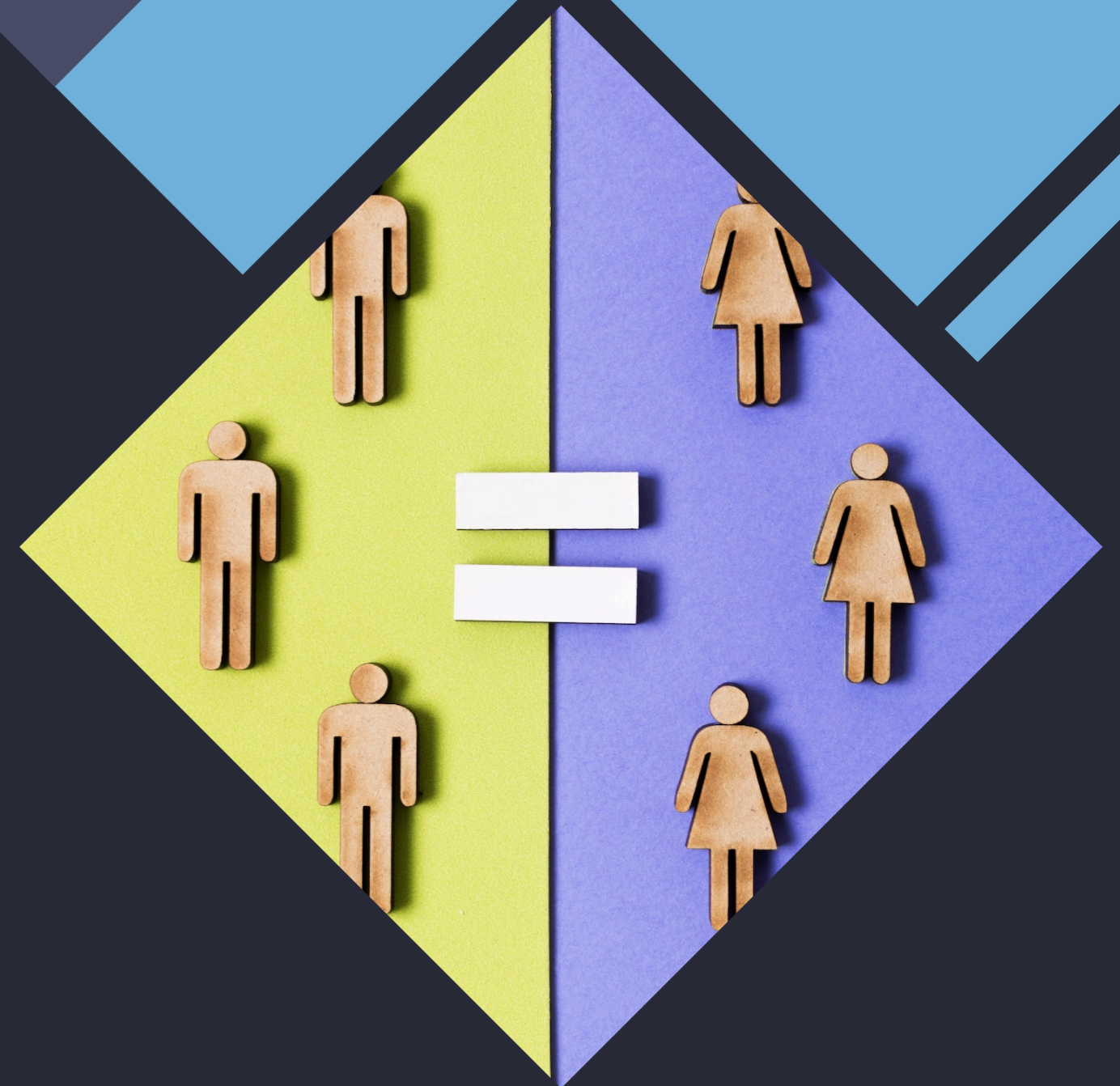


FSH Testing Process

The [FSH test](#) measures the levels of FSH in the blood. It is typically performed on the **third day of the menstrual cycle** for women. The results help in diagnosing conditions like **polycystic ovary syndrome (PCOS)** and menopause.

Interpreting FSH Levels

Normal FSH levels vary by age and gender. In women, **high FSH levels** can indicate menopause or diminished ovarian reserve, while **low levels** may suggest hormonal imbalances. In men, abnormal levels can affect sperm production.



FSH and Fertility

FSH plays a significant role in **fertility assessments**. Elevated FSH levels can signal challenges in conception, while low levels may indicate potential hormonal disorders. Understanding these levels is essential for effective treatment planning.



Conclusion

The **FSH test** is a valuable tool in assessing reproductive health. By understanding FSH levels, healthcare providers can better diagnose and treat fertility issues, ensuring comprehensive care for individuals seeking to understand their reproductive health.

Thanks!

Do you have any
questions?

care@redcliffelabs.com
898 8988787

<https://redcliffelabs.com/follicle-stimulating-hormone-fsh-test>

