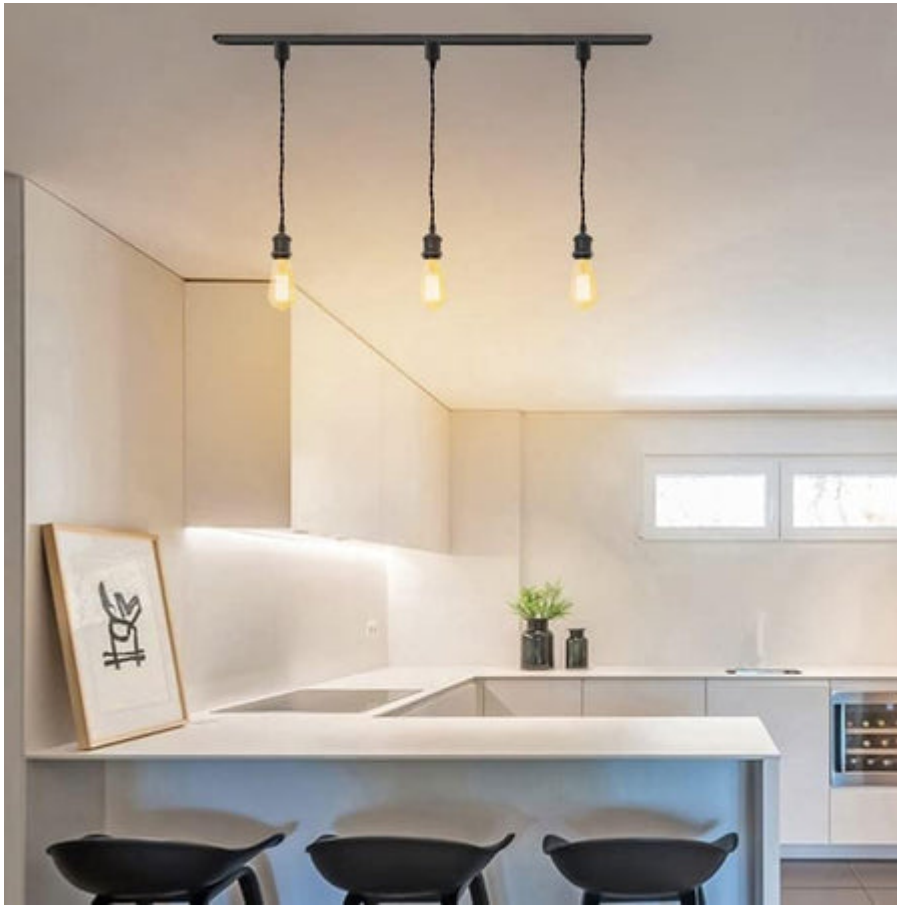


Illuminate Your Space: Discover the Secrets of Track Lighting Mastery!

Track lighting has emerged as a versatile and stylish solution for various interior design needs. Whether you're looking to highlight artwork, create a cozy ambiance in your living room, or cast functional light in a kitchen, [track light fixtures](#) can be the perfect fit. Their adaptability allows for a wide range of applications, making them a popular choice among homeowners and designers alike. In this article, we will delve into the different types of track light fixtures, explore their features, and guide you through the installation process to help you master the art of track lighting in your space.



Understanding Track Light Fixtures

Track light fixtures are a modern lighting solution that involves a series of lights attached to a track, allowing for adjustable positioning and direction. Unlike traditional fixed lighting options, track lighting offers flexibility to direct light where it's needed most. The main components of track lighting include the track itself, which can be mounted on ceilings or walls, and the light fixtures, which can be moved and adjusted along the track. This system stands out from other lighting options, such as recessed lights or pendant fixtures, due to its ability to provide both general and task lighting while being aesthetically pleasing. A friend of mine recently renovated her home and opted for track lighting in her kitchen, and she couldn't be happier with the results; it allows her to easily direct light onto her countertops while adding a modern flair to the space.

Types of Track Light Fixtures

Track light fixtures come in various types, each designed to meet different lighting needs and aesthetic preferences. The most common types include linear, flexible, and monorail systems, each offering unique advantages. Linear track lighting consists of a straight track with multiple fixtures attached, making it ideal for long hallways or large rooms where even illumination is desired. Flexible track lighting, on the other hand, allows for curves and bends in the track, making it perfect for unique layouts and creative installations. Monorail systems feature a single rail with lights that can be positioned anywhere along the track, offering a sleek and contemporary look. When my colleague decided to install flexible track lighting in her art studio, she was thrilled with how it allowed her to create a dynamic lighting scheme that could adapt to her changing needs and projects.

Linear Track Lighting

Linear track lighting is characterized by its straight, uninterrupted track design, which can house multiple light fixtures in a row. This type of system is particularly effective in spaces that require uniform lighting, such as galleries, kitchen islands, or workspaces. The fixtures can be spaced evenly along the track, providing consistent illumination. Additionally, linear track lighting is available in various styles and finishes, allowing homeowners to choose designs that complement their interior decor. The straightforward installation process also makes it a favored option for DIY enthusiasts.

Flexible Track Lighting

Flexible track lighting systems are designed to adapt to the contours of a space, featuring tracks that can bend and twist to fit unconventional layouts. This versatility means that you can create unique configurations that cater to your specific lighting needs. For instance, you might choose to highlight architectural

features or artwork by curving the track around a corner. The adjustable nature of flexible track lighting makes it an excellent option for areas where traditional lighting would be challenging to install. This was the case for another friend of mine who used flexible track lighting in her home office; she was able to create a customized lighting arrangement that fits perfectly with her workspace.

Features to Consider

When selecting track light fixtures, there are several key features to consider to ensure you choose the best option for your needs. One of the most important aspects is adjustability; many track lights come with swiveling heads that allow you to direct light precisely where it's needed. Additionally, consider the type of bulbs used in the fixtures, as LED options are energy-efficient and long-lasting. Another factor to keep in mind is the design style of the fixtures, which should harmonize with the overall aesthetic of your space. Whether you're going for a modern, industrial look or a more traditional vibe, there's a track lighting option to suit your taste. For instance, during a recent renovation, I helped a friend choose track lights with a sleek, minimalist design that perfectly complemented her contemporary kitchen.

Installation Methods

Installing track light fixtures can be a straightforward process, but it requires some preparation and the right tools. Before you begin, ensure that you have a plan for where the track will be installed, taking into account the lighting needs of the space. You'll need tools such as a drill, screwdriver, and a level to ensure everything is aligned correctly. Safety is paramount during installation; always turn off the power at the circuit breaker and use appropriate safety equipment. Most track lighting systems come with detailed installation instructions that guide you through the process step-by-step. A friend of mine recently tackled a DIY track lighting installation in her living room, and she found the entire process manageable with a bit of patience and careful planning.

Enhancing Your Space with Track Lighting

Track lighting offers an incredible blend of flexibility, style, and functionality, making it an ideal choice for illuminating various spaces in your home. By understanding the different types of track light fixtures, their features, and installation methods, you can confidently enhance your interior design. Whether you choose linear, flexible, or monorail systems, experimenting with track lighting can transform your environment and create a warm, inviting atmosphere. Don't hesitate to explore the possibilities track lighting brings to your home; you might just find the perfect solution to elevate your space!